

A photograph taken from inside a room, looking out through a window. The window frame is dark, and the view outside is a bright, sunny day. The landscape is lush and green, featuring a grassy field in the foreground, a wooden fence, and several trees with dense foliage. The sky is clear and blue. The text "Lekeberg - close to the nature" is overlaid on the lower half of the image in a green, outlined font.

**Lekeberg -**  
**close to the nature**

*Hello!*

*Here come greetings from  
Lekeberg. We have a wonderful  
time with bath and sun.*

*There are a lot of memories from  
the past and it's easy to feel the  
presence of the ancestors.*

*The history is exciting and very  
alive. There are also a lot of  
wonderful places for a picnic.*

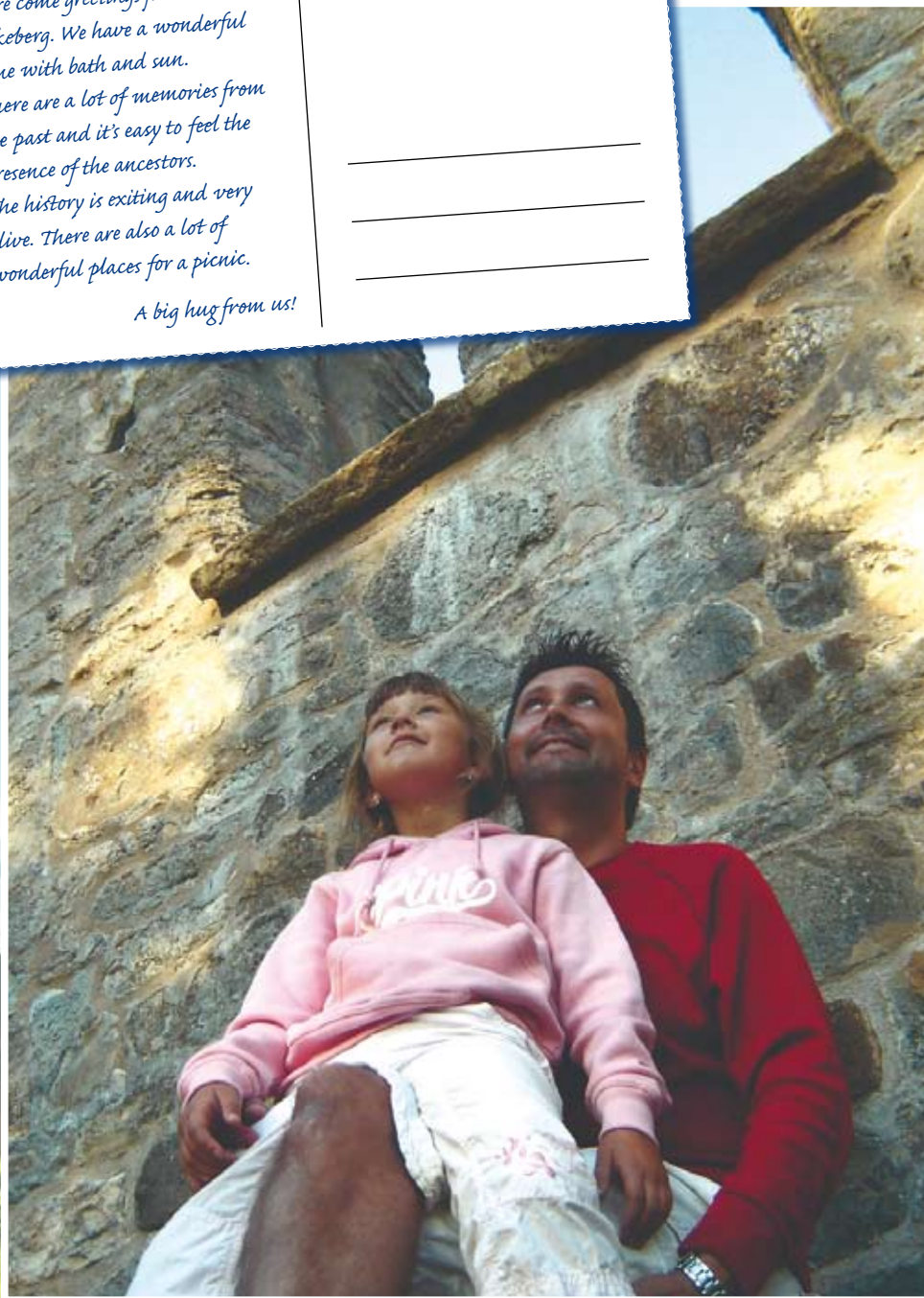
*A big hug from us!*



---

---

---



# WELCOME TO LEKEBERG!



*A young district in  
Närke with old traditions*

Lekeberg is an old mining district, where iron ore played an important part. History now, but it has left its marks in the form of furnace ruins, mine shafts, excavations and nature reserves. There are remnants of another kind, too, at Riseberga, the site of a medieval convent.

Lekeberg today is a predominantly rural area. Over half of the district's population live outside the town centres, with farming playing an important part. There are also very active cultural activities and associations.

Apart from those who live here, our greatest asset is the beautiful countryside and its opportunities for a wide range of outdoor recreational activities, with bathing lakes and footpaths throughout the region.

Although Lekeberg is small, its population is steadily increasing, offering potential development opportunities for companies, homes and services.

Lekeberg is well worth a visit. Not just to see part of Sweden's history, but also for a modern-day spectrum of activities and relaxation.

**We look forward to seeing  
you in Lekeberg.**

Henrik Hult  
Chairman, Lekeberg District Council

# INFORMATION

This folder describes just a selection of what we can offer our residents and visitors. Much more information, with details of special events, can be found on our web site <http://www.lekeberg.se/turism>, or you can phone to +46 (0) 585 81100.

**Other folders and brochures are available from:**

- Lekhyttan: The information notice board at the petrol station
- Mullhyttan: The information notice board on the road in from Svartå
- Götabro: The information notice board at the conference centre
- Fjugesta: In the entrance to the council offices on the square

*Photographs: Ulrika Gustafsson, Lennart M Pettersson, Jette Bergström, Åke Gunnarson.*



# History brought to life

Churches and local museums reflect much of an area's history. In Lekeberg, they range in age from the 13th century up to the present.

All the local museums arrange many different activities during the summer, such as Sunday cafés with entertainment, art exhibitions, various theme days and other events. Some also arrange Christmas markets.



**Englas Hus**  
Storgatan 20, Fjugesta  
Tfn 0585-405 86

**Lekebergs-  
mäklaren AB**  
Tfn 0585-200 77  
[www.lekebergsmaklaren.com](http://www.lekebergsmaklaren.com)

**Lisas Växthus**  
Pelargoner, Tfn 0585-280 96  
[www.lisasvaxthus.com](http://www.lisasvaxthus.com)

**Lagårdsboa**  
Hantverk & Loppis  
Edsberg, Fjugesta  
Tfn 0585-281 64

**KARLSKOGA**

**ÖREBRO**

**E18**

**E20**

**E18**

**LANNA**



**205**

**204**

**MULLHYTTAN**

**FJUGESTA**

**KUMLA**

**HALLSBERG**

**E20**

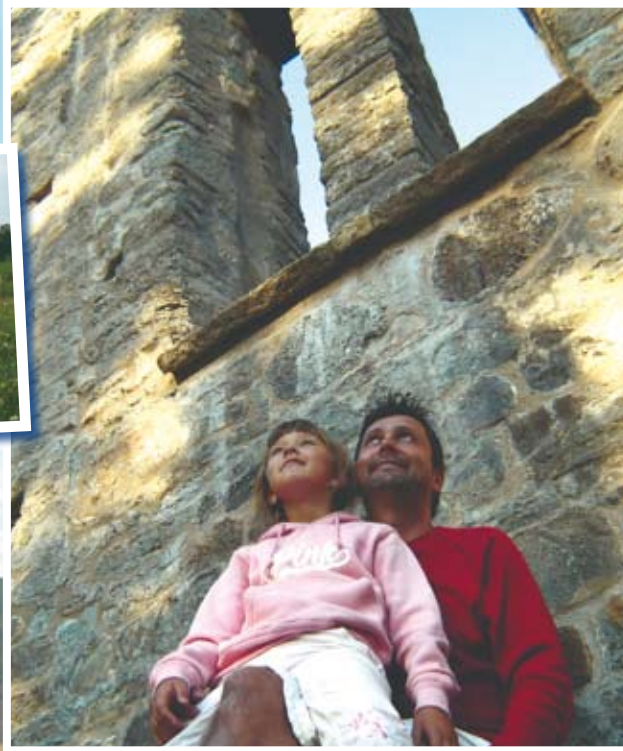


# Enjoy the stillness

An opportunity just to unwind - increasingly rare today. Here, all around, our wonderful nature offers peace and quiet for relaxation. In the spring and early summer, there are carpets of wild flowers in meadows and woodland. Or why not go further afield with a bicycle and picnic basket, listen

to the birds and simply soak up the scenery? Later in the year, the forests offer the reward of berries and fungi to pick.

The ruins of Riseberga convent, chapel and amphitheatre provide a quiet spot for inner reflection.



**Handelsbanken/  
Stadshypotek AB**  
Sveagatan 1, Fjugesta  
Tfn 0585-100 20

**Sparbanksbörsen**  
För kultur & nöje  
[www.lekebergsrevyn.nu](http://www.lekebergsrevyn.nu)

**Guidning vid  
Riseberga**  
Tfn 0585-811 00

**Ateljé Mjölksbo  
konst & böcker**  
Letstigen 20, Mullhyttan  
Tfn 076-232 63 55  
[www.mjolksbo.dinstudio.se](http://www.mjolksbo.dinstudio.se)

**Ateljé Christina**  
Tegelgatan 12, Fjugesta  
Tfn 0585-311 41

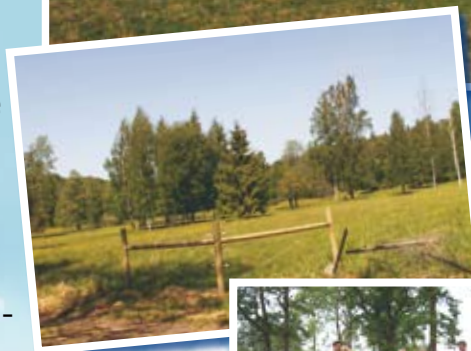
**Hallagården**  
Lekhyttan, Vintrosa  
Tfn 019-29 20 92  
[www.hallagarden.nu](http://www.hallagarden.nu)

# Some extra special environments

The three areas of **Ekåsen, Håvesta ekhage and Tjugestaåsen** are of national interest, forming part of the Europe-wide Natura 2000 network of protected sites. They include many ancient monuments, including one of the county's largest iron age burial grounds. It consists of several drum-lins, long oval mounds of compacted boulder clay, rounded and smoothed by past glacial action, looking like waves in the landscape.

Most of the **Lekeberga-Sälven** nature reserve consists of an open ravine landscape where the Garphytte river and the Lekhytte river join and flow into the Svartå river.

**Bergaskogen** is the newest nature reserve. Close to the Fjugesta urban area, it is handicap-friendly and enables those with various functional disabilities to enjoy the countryside.



**Gökhults groddammar (the Gökhult frog pools)** is another nature reserve close to an urban area, just outside Fjugesta on the R204 road. There are even tunnels under the road to reduce the risks to frogs moving from one area to another.

**Sixtorp** was taken over by a county recreational organisation a few years ago, and became a nature reserve in 2006.

In addition to these nature reserves, there are another six, as well as the Garphyttan national park, created in 1909 and one of the first in the country.

**Edsbergs Bygdegård**  
kultur-nöje-konferenser-  
kurser, tfn 070-340 53 82  
[www.edsbergsbygdegard.se](http://www.edsbergsbygdegard.se)

**OKQ8**  
Letstigen 17, Fjugesta  
Tfn 0585-102 10

**Bo på Lantgård**  
Berga gård, Fjugesta  
Tfn 070-631 65 05  
[www.berga.net](http://www.berga.net)

**Bo på Loftet**  
Berga gård, Fjugesta  
Tfn 070-631 65 05  
[www.berga.net](http://www.berga.net)

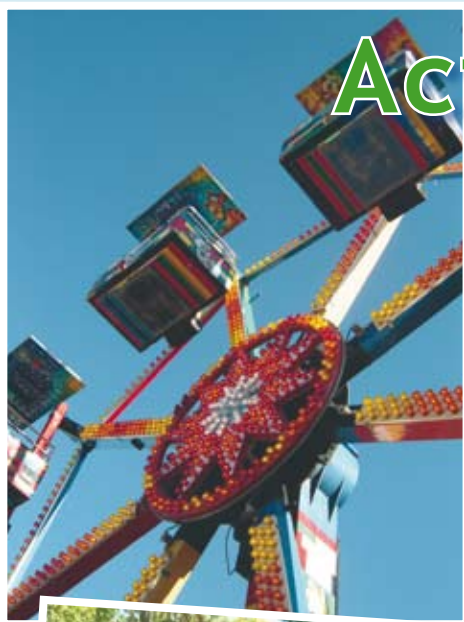
**Äggboden**  
Berga gård, Fjugesta  
Tfn 070-631 65 05  
[www.berga.net](http://www.berga.net)

**Honungskruset**  
Södra Folkavi, Fjugesta  
Tfn 019-22 40 01  
[www.honungskruset.se](http://www.honungskruset.se)

# Activities and annual events

Several markets are held in Lekeberg each year. The oldest is the **Sanna Market**. Started in 1863, it's held on the first Tuesday in October each year. The first Friday after midsummer sees Storgatan in Fjugesta filled with market stalls, and a fair in the Square, for **Lill Market**. The **Mullhytte Market** follows two weeks later, spread over two days, Saturday and Sunday. There are two car boot sales a year on the Square in Fjugesta: **with luck, the right seller is found by the right buyer**. **Örebro Golf Club** in Lanna arranges several tournaments each summer.

There are guided tours of the **Riseberg convent ruins**, which combine a walk around the area and a brief history of the site. Or for those interested in the old days, there's the **Nostalgia Toy Museum** in Kälkesta. Finally, what about a visit to the **Sanna Swimming Pool**, with heated outdoor pools, waterslide and a handicap-friendly area? The site even includes a camping area.



**Örebro Golfklubb**  
Lanna, Vintrosa  
Tfn 019-16 40 70  
[www.orebrogk.com](http://www.orebrogk.com)

**Leksaks-  
nostalgirum**  
Sörgården Kälkesta  
Fjugesta, Tfn 0585-120 01

**Restaurang  
Bondbönan**  
Vallgatan 43, Fjugesta  
Tfn 0585-316 16  
[www.bondbonan.se](http://www.bondbonan.se)

**Rum uthyres**  
Lekeberga gård  
Nils o Ingrid Drakenberg  
019-291132, 070-6291132  
[ingrid.drakenberg@telia.com](mailto:ingrid.drakenberg@telia.com)

**Mullhyttans  
Bygdeförening**  
[www.mullhyttan.nu](http://www.mullhyttan.nu)

**Ateljé Christina**  
Tegelgatan 12, Fjugesta  
Tfn 0585-311 41



# Lekebergs kommun

Bangatan 7, 716 81 Fjugesta

Telefon: 0585-811 00

Fax: 0585-813 38

[www.lekeberg.se](http://www.lekeberg.se)